

PROSPECTUS 2025





“The experience of being at Cambourne Sixth Form is so different. I feel increasingly mature and competent, and settled in quickly, with the amazing support and interaction from staff.” – **Devika**

# CONTENTS

<b>Page 4</b>	Welcome	<b>Page 24</b>	Mathematics
<b>Page 5</b>	Our Sixth Form		Double Mathematics
<b>Page 6</b>	Welcome from our first cohort		Media
<b>Page 8</b>	Enrichment and Extra-Curricular	<b>Page 26</b>	Music
<b>Page 10</b>	Creating your Study Programme		Music Technology
<b>Page 11</b>	Your Subject Choices		Philosophy
<b>Page 12</b>	Course Entry Requirements	<b>Page 28</b>	Photography
<b>Page 13</b>	Application Process		Physical Education
<b>Page 14</b>	Art & Design		Physics
	Biology	<b>Page 30</b>	Politics
	Business		Psychology
<b>Page 16</b>	Chemistry	<b>Page 32</b>	Sociology
	Computer Science		Spanish
	Design Technology: Product Design	<b>Page 34</b>	BTEC Enterprise & Entrepreneurship
<b>Page 18</b>	Drama & Theatre Studies		BTEC Sport
	Economics	<b>Page 36</b>	Core Maths
	English Language		Cambridge IPQ
<b>Page 20</b>	English Literature		Extended Project Qualification
	Environmental Science	<b>Page 38</b>	How to find us
	French	<b>Page 39</b>	Contact us
<b>Page 22</b>	Geography		
	German		
	History		

# WELCOME

Dear Prospective Student,

We're delighted that you're interested in joining us at Cambourne Sixth Form. The opening of our brand new Sixth Form this year is something we're enormously proud of. For staff both at Cambourne Village College and across the Cam Academy Trust, it is hugely exciting to extend our high quality teaching and exceptional pastoral support to sixth formers from our local community and beyond.

Our four key values, chosen by our sixth formers, shape everything that we do, and summarise what makes joining Cambourne Sixth Form a wonderful opportunity. We are **aspirational**, offering a diverse and engaging curriculum with choice from a wide range of subjects, taught by subject specialists in small classes. Individual careers and progression guidance is offered throughout your time with us, to encourage and support your highest aspirations.

Our students grow towards **independence**, using technology and the guidance of experienced staff to develop high quality independent learning and life skills. This value shapes the exceptional pastoral support we offer, as our personalised tutorial

programme prioritises student well-being and progress through 1:1 sessions and targeted support.

We celebrate **diversity** and the rich experiences of our students, which is reflected in our broad offer of enrichment opportunities like sports, arts, volunteering and DofE.

**Community** is vital to us, hence we have strong links across The Cam Academy Trust. Our close partnership with Comberton Sixth Form, also part of the Trust, allows the sharing of expertise, enrichment opportunities, international visits and virtual learning events across our centres.

Moving on to Post-16 study involves making a momentous decision. We're keen to recruit aspiring students who will help us to create a friendly and dynamic learning community where every individual is supported, valued and respected, and strong staff-student relationships are at the heart of our success. If you'd like to join us, please read on, visit our website, and come to our Open Evening on 7th November. We look forward to meeting you.



LYNN MAYES, PRINCIPAL OF CAMBOURNE VILLAGE COLLEGE AND DAVID CLARKE, DIRECTOR OF SIXTH FORM

## OUR VALUES:

INDEPENDENCE  
COMMUNITY  
DIVERSITY  
ASPIRATION



## OUR SIXTH FORM



FRANKIE ROSE | HEAD OF SIXTH FORM

**Welcome to CamSF!** As Head of Sixth Form at CamSF, I oversee every aspect of the student experience. The leadership team and I work to ensure that you have all the support you need to make most of this challenging, exciting and independent phase in your education.

We're rightly proud of our diverse curriculum and our expert teaching staff, who will ensure that you receive a high quality learning experience, whatever subjects are your passion. Sixth Form life is about more than academic achievement, though. You will benefit from a wide range of extra-curricular opportunities beyond the classroom, ones that enable you to develop a wide range of skills and experiences that will benefit you in the future (see page 8 and 9).

Choosing to study with us at CamSF means choosing a centre that prioritises supporting you to achieve. From our Year 12 induction programme that helps you develop independent study skills and transition successfully into Post-16 life, to support in researching and applying to universities and apprenticeships, our specialist support staff ensure you feel confident in taking your next steps. Your wellbeing is our utmost priority, which is why our tutors have regular 1:1 meetings with every student to enable all students to feel supported and empowered.

As our sixth formers attest (see page 6), Cambourne Sixth Form offers a diverse and engaging learning community in truly outstanding facilities. We can't wait for you to join us!

# WELCOME FROM THE FIRST COHORT

Welcome to Cambourne Sixth Form! Since the inception of our Sixth Form, we have been contributing ideas and feedback to develop CamSF from a student's perspective. We have shaped the Sixth Form's ethos and values, suggested enrichment activities, and even tested the Café service! We are proud to have contributed to developing a Sixth Form that is comfortable and inclusive, one that inspires growth in the students who attend. Now that we're full time sixth formers, we are reaping the benefit of the hard work that went into establishing our sixth form; it really is a unique and special learning environment that reflects the diverse community in Cambourne. Despite the large size of Cambourne Village College, CamSF's tutor groups and classes are smaller, so we receive amazing individual support from our teachers. The 1:1 guidance we get from our tutors truly ensures that every CamSF student can reach their full potential.

CamSF is an environment that promotes **independence, aspiration, diversity** and **community**.

We hope that students with a passion for learning and a positive attitude will join us and enrol in our sixth form!



“ The staff are the best thing about CamSF – everyone is so friendly and approachable. The facilities are amazing, I love the freedom of working in the Independent Study or hanging out in The Café.” – **Natalie**

# ENRICHMENT AND EXTRA-CURRICULAR



Sixth Form is the time to broaden your horizons, meet new people and try new things, and no sixth form experience is complete without a broad and varied enrichment and extra-curricular offer.

Here at CamSF, all students in Year 12 take part in timetabled enrichment activities each week, choosing from a wide range of opportunities. These are based on the specialisms and passions of our staff, along with student requests.

Outside of timetabled enrichment, many students take part in other extra-curricular clubs such as sports, orchestra, and the Duke of Edinburgh's Award Scheme. Our Student Council allows students to develop their leadership skills and represent CamSF.

## Enrichment options include:

- A range of sporting opportunities, including football, basketball and fitness
- Debating and oracy
- Musical theatre
- First aid
- Cooking skills for life away from home
- Mentoring for mental health
- Reading mentors

Our amazing facilities make all of this possible. The Lecture Theatre is a great place to attend talks from external speakers, like our History Conference; while our specialist Performance Hall hosts audiences of over 300 people for musicals and productions. We have a 4G sports pitch, fitness suite and hard courts for students to use, as well as all of our purpose-built study facilities and the Sixth Form Library.

Not all of our exciting opportunities take place onsite at CamSF though. We make full use of our proximity to local universities like Cambridge and Anglia Ruskin to expose students to opportunities in higher education. Our ongoing relationship with Peterhouse College ensures that students can discover more about Oxbridge. We facilitate attendance to STEM conferences at Cambridge Science Park as well as our annual CamSF team building day at Ninja Warrior UK!

When it comes to preparing for life after sixth form, we have a comprehensive system of support in place, including visits to UK universities and a dedicated programme of tutorials on applying for university and apprenticeships. Students undertake mock interviews, with 1:1 support from expert tutors to guide you through the process.



So whether you have a passion that you'd love to continue to pursue, or you're keen to discover new skills and opportunities, CamSF offers the ideal experience to explore more.

# CREATING YOUR STUDY PROGRAMME

Every CamSF student follows an individualised programme of study to enable them to pursue their interests and broaden their skillsets, with the goal of equipping and empowering students to progress to their chosen next steps. The freedom and flexibility to build your programme of study is unique to our Trust. We are delighted to offer a broad range of courses that suit the needs and academic interests of all of our students. Your chosen A Levels or BTEC courses will sit at the centre of your programme of study, and can be enhanced by the additional opportunities we offer, allowing you to personalise your study programme by selecting a fourth A Level, or the highly regarded IPQ (International Project Qualification). You could also complete the EQP (Extended Project Qualification), or Level 3 Core Maths; the choice is yours. In order to empower you to make the right decisions about your programme of study, applicants will be given a highly supportive guidance meeting in which we ensure you have the right combination of qualifications to put you on the path to success.

For further information, visit our website [www.cambournesixthform.org](http://www.cambournesixthform.org) or talk to us at our Open Evening on 7th November 2024.



# YOUR SUBJECT CHOICES

## A-LEVELS

- Art & Design
- Biology
- Business
- Chemistry
- Computer Science
- Design Technology – Product Design
- Drama & Theatre Studies
- Economics
- English Language
- English Literature
- Environmental Science
- French
- Geography
- German
- History
- Mathematics
- Double Mathematics
- Media
- Music
- Music Technology
- Photography
- Physical Education
- Physics
- Politics
- Psychology
- Philosophy
- Sociology
- Spanish

Our curriculum is designed to engage and motivate a range of learners and to allow the young people of Camborne and beyond to achieve their aspirations. We value all subjects equally highly – whether A Levels or vocational pathways, Sciences, Humanities or Arts: we believe that every subject we offer will be a worthwhile qualification that leads to future success.

## BTEC NATIONAL LEVEL 3 COURSES

- Enterprise and Entrepreneurship (Business)
- Sport

## ADDITIONAL QUALIFICATIONS

- Cambridge IPQ
- Extended Project (EPQ)
- Core Mathematics

TO FIND OUT MORE, PLEASE VISIT:  
[www.cambournesixthform.org](http://www.cambournesixthform.org)

# COURSE ENTRY REQUIREMENTS

Our Sixth Form provides appropriate courses and routes for committed students seeking to engage in higher-level study.

A-LEVEL	BTEC	IPQ
A minimum of 5 grade 5s at GCSE	A minimum of 5 grade 4s at GCSE, including Maths and English Language	A minimum of 5 grade 7s at GCSE
Minimum of grade 4 in Maths and English		
Minimum of a 6 in subjects to be studied at A-Level*	If a Level 2 vocational qualification forms part of the offer a Pass, Merit or Distinction will be required	
Please note that Level 2 vocational courses are the equivalent of one GCSE and only one at Merit or Distinction will be considered		

\* A number of courses have additional entry requirements. Please check the subject pages for further information.



## APPLICATION PROCESS

**THURSDAY 7TH NOVEMBER 2024**  
CamSF Open Evening

**DECEMBER**  
Application made through your school or college

**TUESDAY 14TH JANUARY**  
Deadline for applications

**FEBRUARY/MARCH**  
Admissions guidance meetings

**EASTER**  
Conditional offers issued

**MAY**  
Information pack issued to all successful applicants

**JULY**  
Welcome event

**AUGUST**  
Contact the college with your GCSE results  
Two-day post-results surgery with the Head of Sixth Form and Senior Leadership Team to resolve any problems

**SEPTEMBER**  
Induction day followed by commencement of courses

2024 — 2025



## A-LEVEL ART & DESIGN

Our lives and world are rich in complex visual imagery. Studying A-Level Art and Design will give you the knowledge and skills to read and interpret visual language from a range of contexts and cultures, both contemporary and historical. As a maker of art and design, you will be part of shaping the visual language of the future, how our world looks and feels and exploring meaning and experience. Many of the skills you will learn as an artist are transferable; creative decision making, self-discipline, reflection and collaboration are all extremely useful across a range of careers.

Creative industries are thriving in the UK. Studying Art and Design at A-Level is a perfect platform for continuing onto foundation and specialist degree courses. Many students go on to study and pursue careers in diverse fields such as fine art, illustration, animation, fashion, digital design, photography, graphics, illustration, textiles, interiors, architecture, theatre and film.

**Additional Entry Requirements**  
Grade 6 in GCSE Art

**Exam Board**  
EDUQAS

SCAN ME TO FIND OUT MORE ABOUT A-LEVEL ART & DESIGN



SCAN ME TO FIND OUT MORE ABOUT A-LEVEL BIOLOGY



### Additional Entry Requirements

Grade 6 in GCSE Maths and a grade 6 in GCSE Biology (if studying single sciences) or Grade 6,7 in GCSE Trilogy Science

**Exam Board**  
OCR

Biology can equip students to pursue a degree and career in many fields such as medicine, research science, zoology, marine biology, pharmacy, ecology and many more. Studying Biology not only provides routes into specific subjects and careers for the future but also gives each student opportunities to gain a wide range of transferable skills such as researching, working with a team, evaluating information and carrying out data analysis.

## A-LEVEL BIOLOGY

Biology is the study of living organisms and how these interact with each other and their environments. It literally means 'the study of life'! Students will learn about the natural world and all of the living things within it. Biology is an ideal choice if you are interested in the human body or fascinated by animals and the world around us. There has never been a more exciting time to be studying Biology.



SCAN ME TO FIND OUT MORE ABOUT A-LEVEL BUSINESS



### Additional Entry Requirements

Grade 5 in GCSE Maths, with a grade 4 or Level 2 Pass in Business if studied at GCSE or Level 2 BTEC

**Exam Board**  
AQA

Many A-Level Business students go on to study at university, including reading business-related subjects. Advanced apprenticeship programmes are also a popular option for those completing this course. Careers in finance, marketing, human resources, management and other 'business-related' areas are all possibilities for students.

## A-LEVEL BUSINESS

Businesses are all around us, with the majority of people working for or running their own business at some point in their lives. The A-Level Business course is designed to provide an insight into the world of business and will enable students to develop a holistic appreciation for business concepts and strategy.







## A-LEVEL CHEMISTRY

From the moment of birth, we are surrounded by chemistry; the air we breathe, the food we eat and the clothes we wear; they're all chemistry. Chemistry is the study of substances: what they're made of, how they interact with each other and the role they play in living things. From research in space to the depths of the oceans, chemistry helps students understand the world around us.

In Chemistry, students will learn problem solving skills, plus analytical and logical thinking. Future pathways can cross over to the other sciences or venture into biochemistry, geochemistry, chemical engineering or physical chemistry, medicine, chemical engineering, veterinary science, anatomy and physiology. Future careers and sectors that you could enter with a chemistry qualification include government agencies, environmental agencies, consultancy, hospitals, universities, public health laboratories, testing companies, manufacturers (Making drugs, food, energy sources, materials, polymers, biotechnology, paint or chemicals).

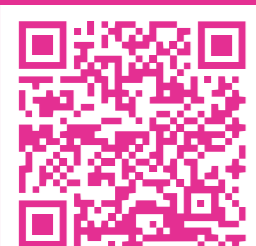
**Additional Entry Requirements**  
Grade 6 in GCSE Maths and a grade 6 in GCSE Chemistry (if studying single sciences) or grade 6,7 in GCSE Trilogy Science

**Exam Board**  
OCR

SCAN ME TO FIND OUT MORE ABOUT A-LEVEL CHEMISTRY



SCAN ME TO FIND OUT MORE ABOUT A-LEVEL COMPUTER SCIENCE



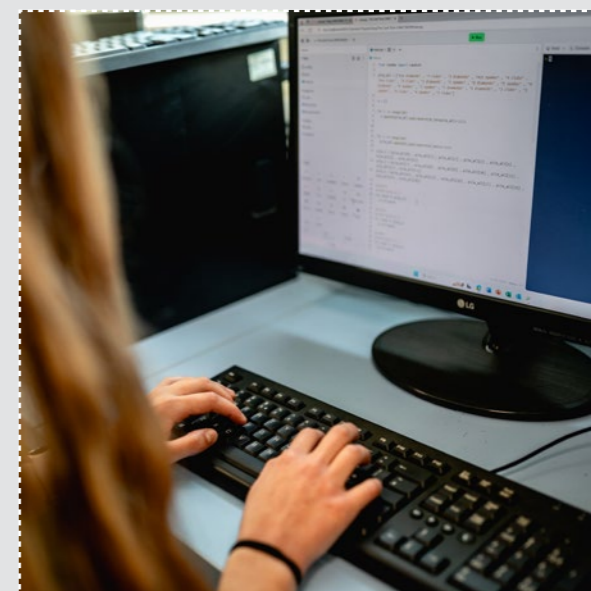
**Additional Entry Requirements**  
Grade 6 in GCSE Maths and a grade 6 in GCSE Computer Science (if studied)

**Exam Board**  
AQA

This course opens a multitude of opportunities for students in their future endeavours. One of the most prominent pathways is pursuing higher education in computer science or a related field at university. Students can specialise in various areas such as artificial intelligence, software engineering, data science, cybersecurity, or computer graphics. Companies in sectors such as finance, healthcare, entertainment, e-commerce, and manufacturing rely heavily on technology and require professionals with a strong understanding of computer science concepts.

## A-LEVEL COMPUTER SCIENCE

In today's increasingly digital world, knowledge of Computer Science has become essential across various fields. Students will be equipped with a deep understanding of fundamental programming concepts, algorithms, and data structures, which form the building blocks of modern technology. This knowledge empowers students to develop their own software solutions, fostering creativity and problem-solving skills. A-Level Computer Science nurtures logical reasoning and analytical thinking abilities, enabling students to approach complex problems systematically.



SCAN ME TO FIND OUT MORE ABOUT A-LEVEL DESIGN TECHNOLOGY : PRODUCT DESIGN



**Additional Entry Requirements**  
Grade 6 in GCSE DT (if studied)

**Exam Board**  
OCR

## DESIGN TECHNOLOGY: PRODUCT DESIGN

Design and Technology is a captivating discipline that offers both inspiration and practicality, fostering growth beyond the A-Level stage. By engaging in this subject, students will acquire a diverse set of skills applicable to a wide array of careers, further studies in design or engineering, and even personal development, as it enhances decision-making abilities such as time and resource management when undertaking projects. Over the span of two years, this course explores the broader principles of design and its impact on users and the world around us.

This course provides an excellent foundation for students aspiring to study the world of design and its interconnected subjects, including engineering, architecture, fashion, and many more. Opting for this course not only opens doors to further study in these domains but also presents an invaluable chance to nurture creativity, foster critical thinking, and cultivate problem-solving skills. These qualities hold tremendous significance in our modern society, being essential attributes for success in any chosen career path.





## A-LEVEL DRAMA & THEATRE STUDIES

Drama and Theatre Studies aims to develop understanding of the theory and practice of drama and consider the social cultural and historical contexts from which plays derive. It will also build students' skills as an actor and director and the course involves working both collaboratively and independently. This course provides a range of practical and theory lessons which is a fantastic way to learn about all areas of theatre.

The course prepares students considering Drama and Theatre courses at university and Drama School. It is also an excellent grounding for interpersonal skills such as communication, confidence building, organisation and teamwork in preparation for careers in areas such as law, social work, psychology and teaching.

### Additional Entry Requirements

Grade 6 in GCSE Drama (if studied)

### Exam Board

Edexcel

SCAN ME TO FIND OUT MORE ABOUT A-LEVEL DRAMA & THEATRE STUDIES



SCAN ME TO FIND OUT MORE ABOUT A-LEVEL ECONOMICS



### Additional Entry Requirements

Grade 6 in GCSE Maths

### Exam Board

OCR

Students who study A-Level Economics often go onto university to read Economics or a related subject. Other students progress onto higher education, apprenticeships, or employment in a huge variety of career areas.

## A-LEVEL ECONOMICS

By studying A-Level Economics, students will develop a broad range of skills applicable to their future life and career(s). This includes an understanding of the key economic factors which influence the world in which we live as well as the ability to analyse economic data.



## A-LEVEL ENGLISH LANGUAGE

English Language is a big part of our everyday lives. We're constantly communicating, listening, reading websites, and analysing; that's what makes studying A-Level English Language relevant. This course will introduce students to a wide selection of multimodal texts that have not been analysed in GCSE English lessons, including blogs, television transcripts and tweets. It will also provide opportunities to write originally and persuasively, undertake research, and read critically. Ultimately, it can provide valuable skills, knowledge, and perspectives that are applicable in various academic, professional, and personal pursuits.

With an A-Level in English Language, students can pursue a degree in various fields such as English Language and Linguistics, Creative Writing, Journalism, Media Studies, Communications, or English Literature. This qualification also equips individuals with strong writing skills, critical thinking abilities, and an understanding of language dynamics. These qualities promote suitability for careers in writing, journalism, publishing, marketing, public relations, teaching, and more.

### Additional Entry Requirements

Grade 6 in English Literature or Language GCSE

### Exam Board

AQA

SCAN ME TO FIND OUT MORE ABOUT A-LEVEL ENGLISH LANGUAGE





## A-LEVEL ENGLISH LITERATURE

Literature reflects human experience and social influences and is a product of its time; understanding the contextual influences on an author and their writing will help students understand how our present society is a culmination of all that has gone before. Not only will the literature studied provoke discussion about seminal issues of the day: gender, race, power, it also explores the commonalities that make us human: love, loss, suffering and triumph. During the course, students will study eight set texts while being encouraged to read independently, widely and in depth. Students will learn to analyse sophisticated ideas and the ways in which they are presented, to synthesise large and complex texts, and to know how to build a convincing and formal argument.

An English Literature A-Level will equip students with a plethora of transferable skills that are sought after by universities and employers. English graduates go on to develop a wide range of careers, the most popular of which are publishing, broadcasting, marketing and PR, journalism, careers of conscience, law, teaching and politics.

**Additional Entry Requirements**  
Grade 6 in GCSE English Literature

**Exam Board**  
AQA

SCAN ME TO FIND OUT MORE ABOUT A-LEVEL ENGLISH LITERATURE



SCAN ME TO FIND OUT MORE ABOUT A-LEVEL ENVIRONMENTAL SCIENCE



### Additional Entry Requirements

Grade 5/5 in Trilogy Science or 5 in Chemistry and 5 in Biology, Grade 5 in Maths, plus grade 5 in English and a 5 in Geography (if studied)

**Exam Board**  
AQA

Following the A-Level course, students can study an environmental science degree leading to careers in environmental management, horticulture, minerals surveyor, water quality scientist. You may also work for the Environmental Agency and DEFRA.

## A-LEVEL ENVIRONMENTAL SCIENCE

Living in an age with increasing numbers of environmental challenges, we need to find real-life solutions to ensure the sustainability of our planet. This makes studying environmental science a key part of this process. The course will make students more aware of what is happening to the Earth's environment and the issues we are currently facing. Using real life case studies, students will investigate and conduct experiments, researching the best methods to obtain data. Students will apply biological, chemical, and physical principles to environmental issues and provide solutions to environmental problems.



## A-LEVEL FRENCH

Do you hope to one day work abroad or speak a language fluently? Are you interested in an academically challenging course with a strong practical application? If so, then studying a French to A-Level could be an ideal choice. The French course will develop language skills, cultural and international understanding, and lifelong communication, analytical and research skills which can be applied at work or for leisure purposes.

Many students follow this course with a languages degree, which usually involves learning two languages alongside literature and/or linguistics. Languages also complement any other subject, and are often combined with popular degree courses such as Law, Business, Marketing, History and Engineering. Language graduates are in high demand by employers in the UK and abroad. Even if the use of French is not the main focus of your career, it is an incredible extra skill which will set you apart from others. A study of A-Level French will lead to a lifelong appreciation of the culture of the French-speaking world.

**Additional Entry Requirements**  
Grade 6 in GCSE French

**Exam Board**  
AQA

SCAN ME TO FIND OUT MORE ABOUT A-LEVEL FRENCH





## A-LEVEL GEOGRAPHY

A-Level Geography is a fascinating course that covers a wide range of perspectives, from the local to the global. This means that Geographers develop in-depth knowledge of the processes and interactions in the physical and human worlds that shape our Earth. This discipline suits those who are curious, who like to travel and explore, and those who wish to become more aware and engaged global citizens. Learning in Geography is underpinned by a huge range of source materials: magazines, news media, documentary and film. Teaching is broad and varied and includes regular and routine practice of vital geographical skills such as producing digital maps, data analysis, planning and undertaking fieldwork.

The study of A-Level Geography can lead to university study on a wide range of related courses, from disaster management to volcanology; universities value the global perspectives that A-Level Geography students gain. Traditional careers in Geography include the Law, public services, Geographical Information Systems, data analysis; careers in activism, campaigning and research are also popular choices.

**Additional Entry Requirements**  
Grade 6 in GCSE Geography

**Exam Board**  
OCR

SCAN ME TO FIND OUT MORE ABOUT A-LEVEL GEOGRAPHY



SCAN ME TO FIND OUT MORE ABOUT A-LEVEL GERMAN



**Additional Entry Requirements**  
Grade 6 in GCSE German

**Exam Board**  
AQA

Many students follow this course with a languages degree, which usually involves learning two languages alongside literature and/or linguistics. Languages also complement any other subject, and are often combined with popular degree courses such as Law, Business, Marketing, History and Engineering. Language graduates are in high demand by employers in the UK and abroad. Even if German is not the main focus of your career, it is an incredible skill that will really set you apart from others. Studying German will give you a lifelong appreciation of the culture of the German-speaking world.

## A-LEVEL GERMAN

Do you hope to one day work abroad or speak a language fluently? Are you interested in an academically challenging course with a strong practical application? If so, then studying a Modern Language like German to A-Level could be the ideal choice. The German course will develop your language skills, cultural and international understanding, and lifelong communication, analytical and research skills which can be applied at work or for leisure purposes.



SCAN ME TO FIND OUT MORE ABOUT A-LEVEL HISTORY



**Additional Entry Requirements**  
Grade 6 in GCSE History

**Exam Board**  
OCR

With History A-Level, students can go on to study the subject at university. However, there is a huge number of transferable skills which students develop through studying History: communication skills (written and verbal), the ability to evaluate critically evidence in a variety of forms, and the ability to evaluate critically arguments and interpretations. It is very highly regarded by employers and will equip students for many different occupations, including teaching, law, journalism and working in the Civil Service.



## A-LEVEL HISTORY

History is a fascinating subject which encourages students to consider the role of individuals, events and key themes and their contributions to our past. It offers parallels with our society today, helping us to explain current events and issues. Everyone has a connection with the past; it is about discovering which aspect of the past unlocks an individual's interest.



## A-LEVEL MATHEMATICS

A-Level mathematics is a highly regarded qualification and most importantly, when studied with enthusiasm and determination, this course will be a great deal of fun. The focus throughout the course will be on problem solving, developing resilience and logical thinking as well as exploring the links between the various aspects of mathematics. The study of mathematics at A-Level requires perseverance, a genuine interest and enjoyment in the subject.

A-Level Mathematics supports a wide range of other A-Level courses such as Chemistry, Physics, Biology, Psychology, Geography, Business studies and Economics. Students with qualifications in A-Level Mathematics find the skills and knowledge gained from the course useful when pursuing careers in areas such as medicine, engineering, veterinary science, finance, accounting, computing, science, law and marketing.

**Additional Entry Requirements**  
Grade 7 in GCSE Maths

**Exam Board**  
AQA

SCAN ME TO FIND OUT MORE ABOUT A-LEVEL MATHEMATICS



SCAN ME TO FIND OUT MORE ABOUT A-LEVEL DOUBLE MATHEMATICS



**Additional Entry Requirements**  
Grade 8 in GCSE Maths

**Exam Board**  
AQA

Since studying Further Mathematics offers an opportunity to study a broader and deeper range of topics, as well as demonstrating a student's ability to tackle more advanced topics, it provides strong foundations for a variety of related degrees at university. The subject has clear links with courses such as Computer Science, Engineering, Physics, Material Science or even Chemistry. Students who gain A-Level qualifications in both Mathematics and Further Mathematics are highly employable and students find the skills and knowledge gained from the course useful when pursuing careers in areas such as medicine, engineering, veterinary science, finance, computing and any scientific discipline.

## A-LEVEL DOUBLE MATHEMATICS

Further mathematicians are passionate about mathematics and enjoy finding the most efficient and elegant solution to a multi-stage problem. Students selecting this course will want to know "why" when understanding the concepts they are tackling and will be able to spot links between the various aspects of mathematics. A-Level Further Mathematics builds on and develops the ideas studied in A-Level Mathematics and introduces new mathematical topics to bridge the gap to degree level mathematics and other subjects with a high mathematical content.



## A-LEVEL MEDIA

A compelling Media education can provide young people with the tools to be able to understand the constant change our society faces and how to adapt to it. The comprehension, communication and creative skills that stem from studying this subject give an essential foothold for any ambitious, enthusiastic student in the 21st century. A-Level Media is the academic study of various media platforms. Students develop skills through the analysis of the different forms of media and examining representations within texts, web content, music videos, computer games, online news and more. Students will explore the impact of production and industry upon media texts.

The possibilities for careers stemming from the study of Media are endless. Studying in this way creates opportunities to express yourself and discover avenues for progression towards many future careers. An A-Level in Media can lead students to a variety of future course and employment options. Students will be well qualified through their experience of the practical coursework element to pursue more vocational courses linked to media production and digital technology. Media Studies will also support study for careers in business such as advertising, marketing, and communications.

**Additional Entry Requirements**  
None

**Exam Board**  
EDUQAS

SCAN ME TO FIND OUT MORE ABOUT A-LEVEL MEDIA





## A-LEVEL MUSIC

Music A-Level is about building skills in performance and composition and gaining a broad musical knowledge through the study of set works. Students should choose to study Music if they are a proficient instrumentalist or singer and/or have a strong interest in composing their own music. The A-Level Music course is a valuable qualification in its own right as it not only demonstrates academic, practical and creative skills but also highlights the qualities of self-discipline and commitment.

With Music A-Level, students can go on to study the subject at university or a conservatoire. As well as following this path with a view to becoming a musical performer or composer, there are a whole host of career pathways in the music industry and related fields where an A-Level in Music would be a huge advantage. Music A-Level is also a subject which enables students to develop a lot of transferable skills: performance, creativity, analysis and broader historical and cultural understanding.

**Additional Entry Requirements**  
Grade 6 in GCSE Music (if studied) and at least one instrument/voice to Grade 5 (including theory)

**Exam Board**  
EDUQAS

SCAN ME TO FIND OUT MORE ABOUT A-LEVEL MUSIC



SCAN ME TO FIND OUT MORE ABOUT A-LEVEL MUSIC TECHNOLOGY



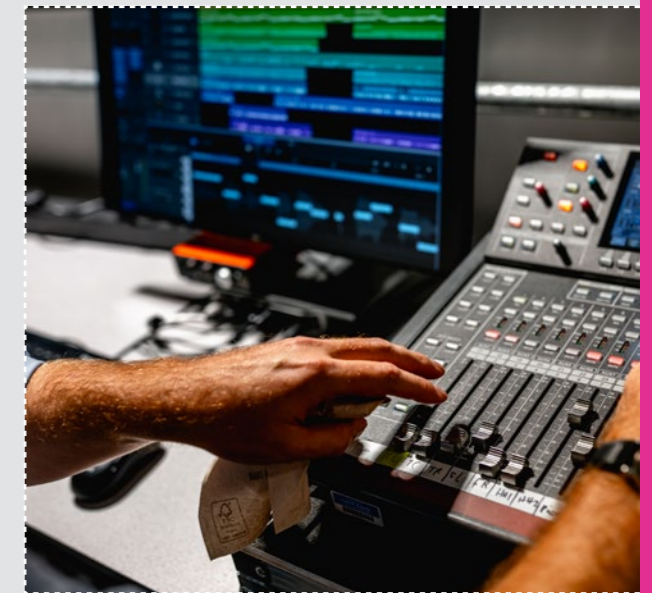
**Additional Entry Requirements**  
None

**Exam Board**  
Edexcel

A-Level Music Technology will enable students to pursue a related university course or apprenticeship. It can also directly lead onto a number of highly creative and technical careers in the music industry and related creative industries. This qualification would also help students to develop a range of transferable skills, both technical and creative.

## A-LEVEL MUSIC TECHNOLOGY

This course aims to develop the knowledge and skills required for the production of music (mainly focused on popular and jazz genres) using MIDI sequencing and studio recording techniques. Students who study A-Level Music Technology may have had the opportunity to produce music as a part of a GCSE course or they may simply have a genuine, keen interest in music as a performer. A degree of practical instrumental skill is extremely helpful, but students often have a range of backgrounds. This course will develop individual musical/technical skills including arranging, composing, recording and producing music.



## A-LEVEL PHILOSOPHY

Philosophy is one of the oldest subjects studied and is ideal for students who want to both question, and know, more. The course covers some of the greatest ideas from history and provides the chance to question them, looking to see whether they still stand up to scrutiny in a modern context. If you are someone who loves to question, discuss, build knowledge, wants to challenge your thinking, this is the course for you. But beware, you may come out of lessons questioning everything you thought you knew.

Philosophy is a highly-regarded subject for both universities and employers due to the need for students to engage with reasoning, build coherent and considered argument, and analyse complex ideas. Philosophy leads to further study in a range of subjects including Philosophy, History, Theology, Law and Politics. Careers are wide and varied with many students going on to work in the legal system, civil service, government, journalism, academia, medical roles, and technological industries.

**Additional Entry Requirements**  
Grade 6 in English Literature or Language GCSE

**Exam Board**  
AQA

SCAN ME TO FIND OUT MORE ABOUT A-LEVEL PHILOSOPHY





## A-LEVEL PHOTOGRAPHY

If you have vision, are creative, self-motivated and love photography, then this is an excellent course for you to develop your skills towards a professional level. The digital world is developing at such a rapid rate, with images at the forefront of everything. This course enables students to learn how to create this content professionally. It is an incredibly exciting time to study the subject, whether focused on documentary, commercial or artistic in terms of style. The combination of creative brief, small group work, computer editing and on-shoot location provides a great balance to the course, enabling the development of a variety of roles and skills.

A-Level Photography can support a huge number of career paths. This can include film, graphics, advertising, marketing, fashion, illustration, fine art and web design. Specific careers in photography could involve portrait, photo-journalism, scientific, editorial, fashion, sports photography, publicity and freelance work. The creativity and independent idea development will also support a wide range of careers.

### Additional Entry Requirements

None

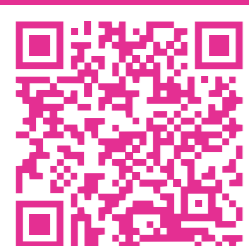
### Exam Board

EDUQAS

SCAN ME TO FIND OUT MORE ABOUT A-LEVEL PHOTOGRAPHY



SCAN ME TO FIND OUT MORE ABOUT A-LEVEL PHYSICAL EDUCATION



### Additional Entry Requirements

Grade 6 in GCSE PE (if studied) and club level involvement in at least one sport

### Exam Board

AQA

A-Level Physical Education is an excellent base for a university degree in sports science, sports management, healthcare, or exercise and health. Physical Education can also complement further study in biology, human biology, physics, psychology, nutrition, sociology and many more. The course can open up a range of career opportunities including: sports development, sports coaching, physiotherapy, personal training or becoming one of the next generation of PE teachers.

## A-LEVEL PHYSICAL EDUCATION

A-Level Physical Education encourages students to immerse themselves in the world of sports and PE with the chance to perform or coach a sport. Students will be equipped with both depth and breadth of knowledge, understanding and skills relating to scientific, socio-cultural and practical aspects of physical education. The skills developed and knowledge gained throughout the course are a great basis for anyone wants to study PE, sport science, coaching and personal training to a deeper level.



## A-LEVEL PHYSICS

Do you enjoy independent problem solving and working things out for yourself? Do you enjoy practical science and want to learn how to use advanced scientific equipment like oscilloscopes, lasers and radioactive materials? Do you enjoy thinking about the big questions of life, time and the universe? Then Physics is for you! Physics is all about the fundamental laws which govern how the world works. Through careful experimentation, research and analysis you will come to understand these laws, and in doing so enhance your appreciation of the world around you.

Physics A-Level is an excellent preparation for a broad range of higher education study. Many students follow this course with a physics-related degree. The course also has clear links with a range of other subjects which are popular degree courses such as mathematics, medicine, computing, engineering (electronics, mechanical) and architecture. Other students find the skills and knowledge gained from the A-Level physics course useful when pursuing degree courses or careers in other areas including business, finance and management.

### Additional Entry Requirements

Grade 6 in GCSE Maths and a grade 6 in GCSE Physics (if studying single sciences) or Grade 6,7 in GCSE Trilogy Science

### Exam Board

OCR

SCAN ME TO FIND OUT MORE ABOUT A-LEVEL PHYSICS





## A-LEVEL POLITICS

Politicians make decisions that affect every part of our lives. Many unexpected and unpredictable events have taken place both in the UK and globally in recent years. The Politics A-Level course will allow students to develop a strong understanding of the British system, as well as the opportunity to study American or Global Politics. Students will gain insight into the fundamental political ideas that have shaped our world. We will study the core political ideologies of conservatism, liberalism and socialism as well as look at other ideologies such as feminism and nationalism. We will examine the influence of significant political thinkers such as Edmund Burke, Karl Marx and Mary Wollstonecraft.

Students will develop and improve your research and communication skills as well as your analytical skills. These are skills which are highly valued by universities and employers. Students of A-Level Politics go on to study a wide variety of subjects at university, including Politics, PPE (Philosophy, Politics and Economics), International Relations, Law and History.

**Additional Entry Requirements**  
Grade 6 in English Literature or Language GCSE or a grade 6 in a humanities subject

**Exam Board**  
Edexcel

SCAN ME TO FIND OUT MORE ABOUT A-LEVEL POLITICS



SCAN ME TO FIND OUT MORE ABOUT A-LEVEL PSYCHOLOGY



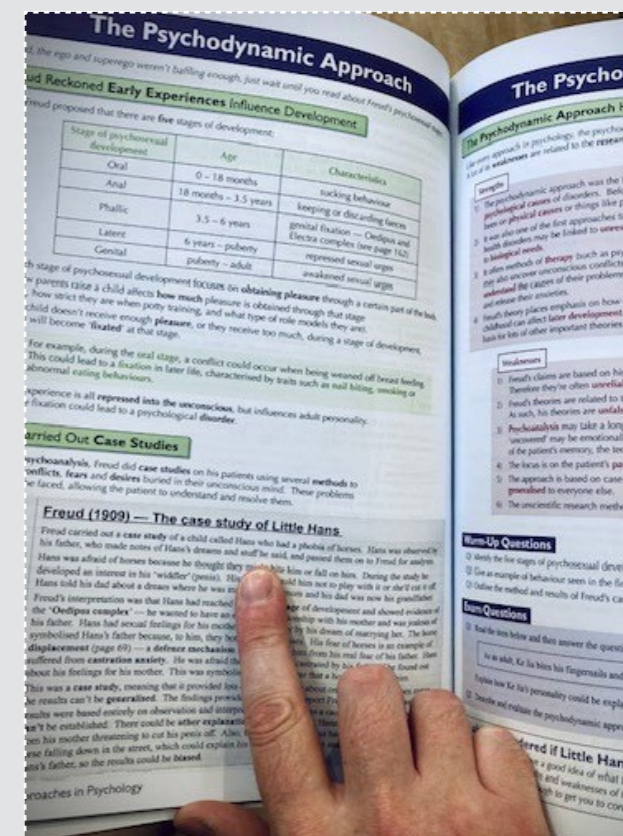
**Additional Entry Requirements**  
Grade 6 in English Literature or Language GCSE or a humanities subject with a further grade 5 in GCSE Maths (and a grade 6 in GCSE Psychology if studied)

**Exam Board**  
OCR

Many students go on to study a psychology-related degree, but it will also prepare students well for other degrees and careers in areas such as biology, sociology, philosophy, maths, counselling, medicine (particularly psychiatry), nursing, nutrition, policing, criminology and forensics. The skills you will develop during the course will be useful for you no matter what field you choose to enter.

## A-LEVEL PSYCHOLOGY

Psychologists try to understand people through careful controlled observation. All sciences rely on rigorous scientific methods and in this way, A-Level Psychology is no different to Biology, Physics or Chemistry. However, Psychology does not study molecules or plants; it studies people, their behaviour towards themselves and each other and how they learn and think. Most of the research that psychologists do falls into one of five general areas: developmental, social, physiological, cognitive and individual differences. We will consider each of these in turn, using previous studies to help us understand the different approaches, and how these lead to different theories and explanations. We will also be carrying out some research of our own.







## A-LEVEL SOCIOLOGY

Sociology is the study of people in society. Sociology looks at how our identities and behaviour are shaped by society and by social groups such as our families, friends, schools and mass media. Sociology also tries to explain how and why society is changing. Studying sociology will give students a better understanding of the society we live in and the social influences shaping our lives. Sociology encourages students to look at the social world in a critical way and to answer questions about the society based on evidence rather than just opinions.

A-Level Sociology could lead on to further study in a range of subjects and be useful in a multitude of careers. Many students could follow the course with a degree in philosophy, sociology or psychology, but there is always a huge diversity here. Students find the skills and knowledge gained from sociology useful in areas such as medicine, law, human resources and journalism.

### Additional Entry Requirements

Grade 6 in English Literature or Language GCSE or grade 6 in a humanities subject

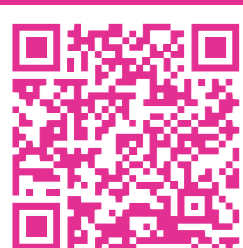
### Exam Board

AQA

SCAN ME TO FIND OUT MORE ABOUT A-LEVEL SOCIOLOGY



SCAN ME TO FIND OUT MORE ABOUT A-LEVEL SPANISH



### Additional Entry Requirements

Grade 6 in GCSE Spanish

### Exam Board

AQA

Many students follow this course with a languages degree, which usually involves learning two languages alongside literature and/or linguistics. Languages are often combined with popular degree courses such as Law, Business, Marketing, History and Engineering. Language graduates are in high demand by employers in the UK and abroad. Even if the use of Spanish is not the main focus of your career, it is an incredible extra skill which will set you apart from others.

## A-LEVEL SPANISH

Do you hope to one day work abroad or speak a language fluently? Are you interested in an academically challenging course with a strong practical application? If so, then studying a Modern Language to A-Level could be the ideal choice. The Spanish course will develop language skills, cultural and international understanding, and lifelong communication, analytical and research skills which can be applied at work or for leisure purposes.





## BTEC ENTERPRISE & ENTREPRENEURSHIP (BUSINESS)

The course will give students a clear idea of what it is like to run a business. The course explores the mindset and traits of an entrepreneur as well as gaining a valuable understanding of what it is like to run a business. This will include learning about the activities undertaken by entrepreneurs such as marketing as well as gaining an understanding of the principles of accounting. BTEC qualifications are assessed by both coursework-based assignments as well as written exams. This qualification is suitable for students who are organised and prefer to be assessed over the duration of the course by a combination of both coursework and exams.

A BTEC in Enterprise and Entrepreneurship will enable students to progress on to higher education, an apprenticeship or to start their own enterprise. As part of the course students will develop transferable knowledge and skills that would be useful in any profession, for example, leadership, problem solving, teamwork, and organisation skills.

### Additional Entry Requirements

Grade 4 in Business if studied at GCSE and at least a Pass in Business if studied at Level 2

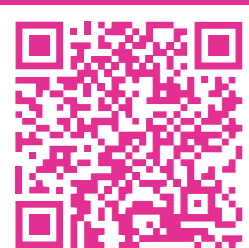
### Exam Board

Edexcel

SCAN ME TO FIND OUT MORE ABOUT BTEC ENTERPRISE & ENTREPRENEURSHIP



SCAN ME TO FIND OUT MORE ABOUT BTEC SPORT



### Additional Entry Requirements

Grade 4 in GCSE PE or a pass at Level 2

### Exam Board

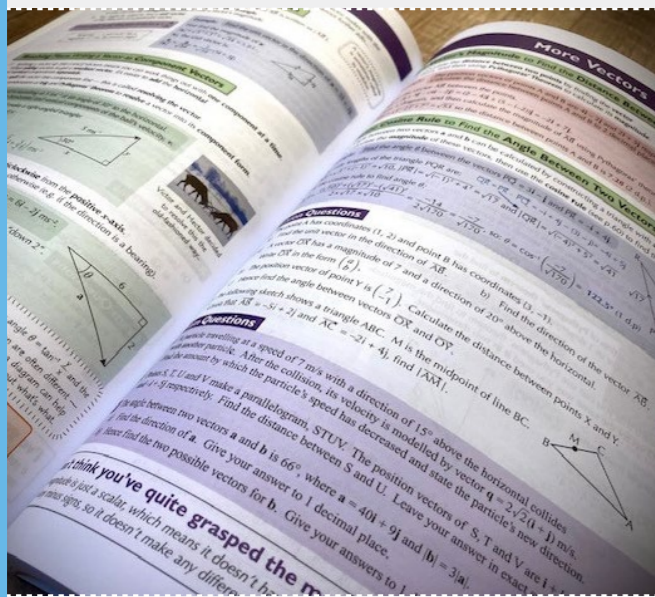
Pearson Edexcel

This course is aimed at students who have a passion for sport and are looking to follow a career in sports performance, coaching/teaching, officiating, journalism or medicine. This course can lead on to a range of sports-related jobs direct from school, but can also earn UCAS points allowing students to continue their studies at university.

## BTEC SPORT

Students interested in the sports and exercise industry should look no further than this course. It will provide the knowledge, skills and understanding of how to go far in the sports industry. The course has been designed for students who have a real interest in the theoretical and practical aspects of anatomy and physiology, physical and psychological sports performance, coaching and fitness. It will give the opportunity to develop your knowledge and investigate a wide range of sport, exercise and coaching aspects.





## CORE MATHS

Many A-Level courses now include an increased amount of mathematics. This often involves working with some high-level statistical ideas that are not studied at GCSE. Core Mathematics is a recognised qualification which provides much of the mathematical and statistical background required in other A-Level subjects. These subjects include Business & Economics, Geography, Biology and Psychology. Alongside the statistical elements of the course, problem solving forms a large part of the course. The majority of this involves starting with something real (such as a newspaper article) and applying mathematics to it.

Degree courses in the subjects mentioned above can also include a large amount of statistical work, and some universities are encouraging sixth formers to study the subject because it will help to support applications for university degree courses and will help the students during the course too. Many employers say they are keen to work with people who can solve problems and the work we do with real-life problem solving will help with this.

**Additional Entry Requirements**  
Grade 4 in GCSE Maths

**Exam Board**  
AQA

SCAN ME TO FIND OUT MORE ABOUT CORE MATHS



SCAN ME TO FIND OUT MORE ABOUT CAMBRIDGE INTERNATIONAL PROJECT QUALIFICATION



**Additional Entry Requirements**  
5 Grade 7s at GCSE

The aim of this course is to encourage a successful transition to university through a greater focus on independent, self-directed learning, as well as lateral, critical and creative thinking. As such, it is highly valued by many of the most competitive higher education institutions.

## CAMBRIDGE IPQ

We live in the digital era, an information-rich society in which young people need the skills and dispositions to think critically and creatively. Thinking critically will enable learners to identify, analyse and evaluate situations, ideas and information. Thinking creatively will enable learners to solve new problems and approach new challenges. Cambridge International Project Qualification (Cambridge IPQ) is a standalone qualification, designed to provide an opportunity for learners to develop these skills and dispositions by carrying out research into a topic of their choice linked to their A-Level studies.



SCAN ME TO FIND OUT MORE ABOUT EPQ



**Additional Entry Requirements**  
None

**Exam Board**  
Pearson Edexcel

Completing the EPQ helps students to develop and evidence a wealth of valuable skills including independent research, project planning, critical analysis, evaluation and presentation skills, all of which are highly valued by universities and employers.

## EXTENDED PROJECT QUALIFICATION (EPQ)

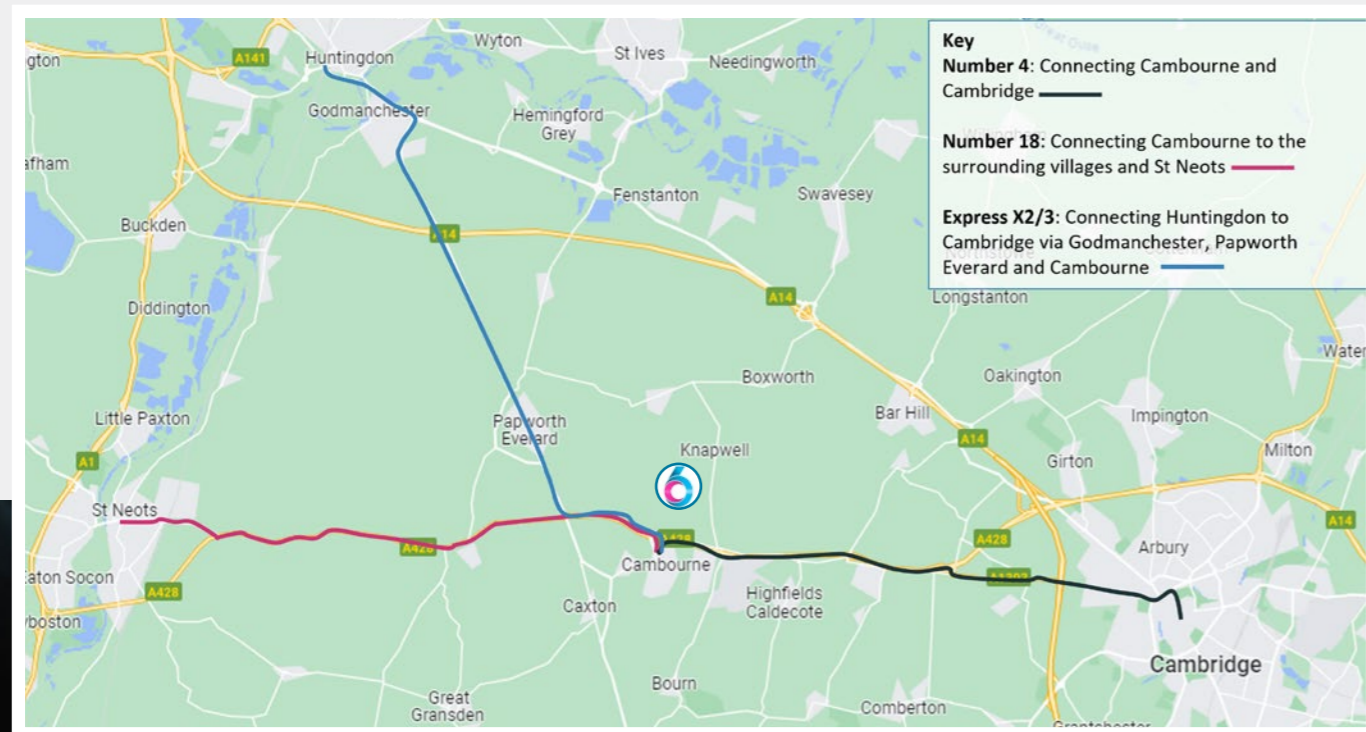
For many students, the EPQ represents a wonderful opportunity to demonstrate passion for a chosen subject or topic, alongside development of advanced learning skills. The EPQ is characterised by independent learning, comprising a single piece of work which shows evidence of planning, preparation, research and autonomous working. It was developed with the intention of strengthening the programme of study for 16-19 year olds by testing a wider range of skills and providing a 'tool kit' of transferable skills that better prepares students for higher education and employment.



# HOW TO GET TO US

Cambourne Sixth Form is well served by several bus services, provided by Stagecoach East and Whippet.

Timetable information can be found at: [www.stagecoachbus.com](http://www.stagecoachbus.com) and [www.go-whippet.co.uk](http://www.go-whippet.co.uk)



# CONTACT US

For further information, advice and guidance, please email [info@cambournesixthform.org](mailto:info@cambournesixthform.org)  
You can also receive our updates on Facebook:  
**Cambourne Sixth Form**

"I had high expectations, but the teachers have honestly surpassed them. Their subject knowledge is amazing, and they are so supportive. I can really see how what they have planned will help me learn and make progress, and I genuinely feel excited for every Maths lesson." – **Mabril**



**CAMBOURNE**  
SIXTH FORM

Sheepfold Lane, Cambourne  
Cambridge CB23 6FR

T 01954 284000

[www.cambournesixthform.org](http://www.cambournesixthform.org)  
[info@cambournesixthform.org](mailto:info@cambournesixthform.org)  
X @SFCambourne